

PROJECT:
PROPOSED ONE BLOCK OF G+P1+P2+25 STORED & THREE BLOCKS OF G+P1+P2+P3+24 STORED RESIDENTIAL BUILDING

OWNER:
 1. ROLEY COMMSALE PRIVATE LIMITED REPRESENTED BY ITS DIRECTOR SRI KISHAN KUMAR AGARWAL
 2. HORIZON ISPAT COMPANY PRIVATE LIMITED REPRESENTED BY ITS DIRECTOR SRI SAURAV KUMAR AGARWAL
 3. LOVELY MERCANTILE PRIVATE LIMITED REPRESENTED BY ITS DIRECTOR SHRI ASHOK KUMAR AGARWAL
 4. K.B. TEA PRODUCT PVT. LTD. REPRESENTED BY ITS DIRECTOR SRI ASHOK KUMAR AGARWAL
 5. DALMA TEA PACKAGING PRIVATE LIMITED REPRESENTED BY GOPAL DALMA

LOCATION: OPP. UTTORAYAN TOWNSHIP, SILIGURI

SCHEDULE OF LAND:
 U.I. NO. :- 88
 J.L. NO. :- 470,335,338,439,446,447,
 298,305,336,408,51,
 PLOT NO. :- 704,739,761,720,737,736,
 804,759,818,819,801 (L.R.)
 KHATAN NO. :- 280 (R.S.), 307 (L.R.)
 P.S. :- MATIGATA
 DIST. :- DARRIGELING
 Latitude :- 88° 29' 52.98" (E)
 Longitude :- 26° 22' 35.98" (N)

NOTE: DIMENSIONS ARE IN MILLIMETRES.
 1. ONLY WRITTEN DIMENSIONS ARE TO BE FOLLOWED.
 2. ALL EXTERNAL WALLS SHALL BE 200MM THICK AND INTERNAL WALL SHALL BE 150MM THICK.
 3. ALL MASONRY WORK SHALL BE CARRIED OUT WITH FLY ASH BASED AAC BLOCKS.
 4. ALL MASONRY WORK SHALL BE INSTALLED TO RESIST SOLAR, WIND OR OTHER RENEWABLE ENERGY SHALL BE INSTALLED TO CONNECTED LOAD OR AS PER THE STATE / LOCAL BUILDING BYE-LAWS REQUIREMENT, WHICHEVER IS HIGHER.

DECLARATION OF OWNERS:-
 I DO HEREBY DECLARE THAT THE BUILDING PROPOSED FOR CONSTRUCTION SHALL BE SUPERVISED BY THE S.A.E. SIGNING THE BUILDING PLAN APPLICATION OR IN HIS ABSENCE BY THE S.A.E. SIGNING THE BUILDING PLAN APPLICATION AND AS APPROVED BY THE AUTHORITY.

SANJIV PAREKH (CONS. ENG.)
 B.C.E. REG.# 418202-4
 11/1, ANAND NAGAR, KANUNO
 SILIGURI-734012, S.A.C.

SIGNATURE OF OWNER
DECLARATION OF STRUCTURAL ENGINEER
 THE STRUCTURAL DESIGN AND DRAWING OF BOTH FOUNDATION AND SUPER STRUCTURE OF THE BUILDING HAS BEEN MADE BY ME CONSIDERING ALL RELEVANT ASPECTS INCLUDING SEISMIC LOAD AS PER THE NATIONAL BUILDING CODE OF INDIA AND CERTIFIED THAT IT IS SAFE AND STABLE IN ALL RESPECT.
 MOREOVER I ME SHALL BE HELD RESPONSIBLE FOR ANY STRUCTURE COLLAPSE AFTER BEYOND DATE OF TAKING OCCUPANCY CERTIFICATE.

SIGNATURE OF STRUCTURAL ENGINEER
DESIGNED AND CHECKED BY ME

SIGNATURE OF GEO-TECHNICAL ENGINEER
DECLARATION OF ARCHITECT / I.B.S.
 I DO HEREBY DECLARE THAT THE KEY PLAN, SITE PLAN AND THE BUILDING PLAN HAVE BEEN PREPARED UNDER MY SUPERVISION AND I SHALL BE RESPONSIBLE FOR THE SUPERVISION OF THE BUILDING.

SIGNATURE OF ARCHITECT / I.B.S.

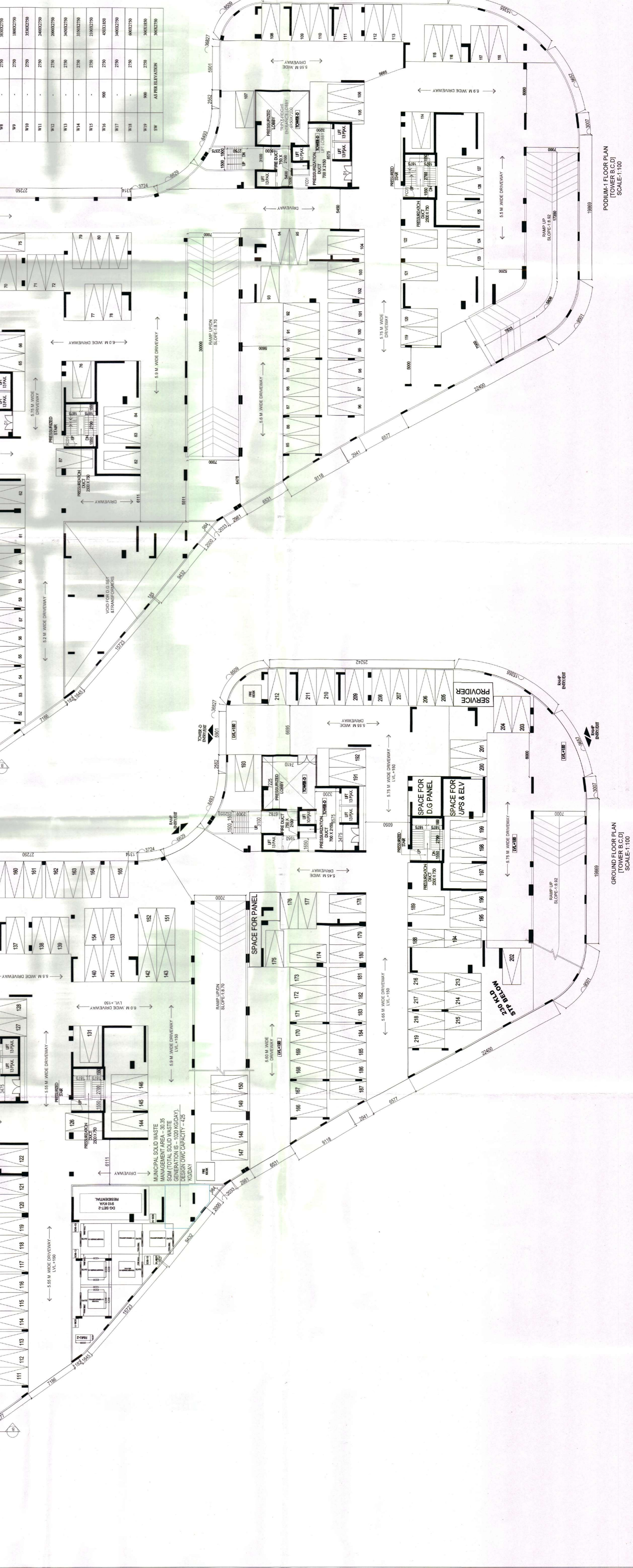
TITLE: GROUND FLOOR PLAN (1ST PODIUM FLOOR PLAN)

SCALE: 1:200
DATE: 22.03.23
SHEET NO.: 06/09
CHD BY: K. K. ROY
DRAWN BY: ABHISHTARBARIA



CELL	LEVEL	SIZE
101	270	300X270
102	270	300X270
103	270	300X270
104	270	300X270
105	270	300X270
106	270	300X270
107	270	300X270
108	270	300X270
109	270	300X270
110	270	300X270
111	270	300X270
112	270	300X270
113	270	300X270
114	270	300X270
115	270	300X270
116	270	300X270
117	270	300X270
118	270	300X270
119	270	300X270
120	270	300X270

CELL	LEVEL	SIZE
121	270	300X270
122	270	300X270
123	270	300X270
124	270	300X270
125	270	300X270
126	270	300X270
127	270	300X270
128	270	300X270
129	270	300X270
130	270	300X270
131	270	300X270
132	270	300X270
133	270	300X270
134	270	300X270
135	270	300X270
136	270	300X270
137	270	300X270
138	270	300X270
139	270	300X270
140	270	300X270



TITLE: GROUND FLOOR PLAN (TOWER B,C,D)
SCALE: 1:100

PRINCIPAL ARCHITECT:
 SANJIV PAREKH
 11/1, ANAND NAGAR, KANUNO
 SILIGURI-734012, S.A.C.

RESIDENT ARCHITECT:
 GREEN ARCHITECTURE CONSULTING ENGINEERS
 PVT. LTD.
 F-0108, 1ST FLOOR,
 CITY CENTRE, OFFICE
 BLOCK, UTTORAYAN,
 SILIGURI - 734010.